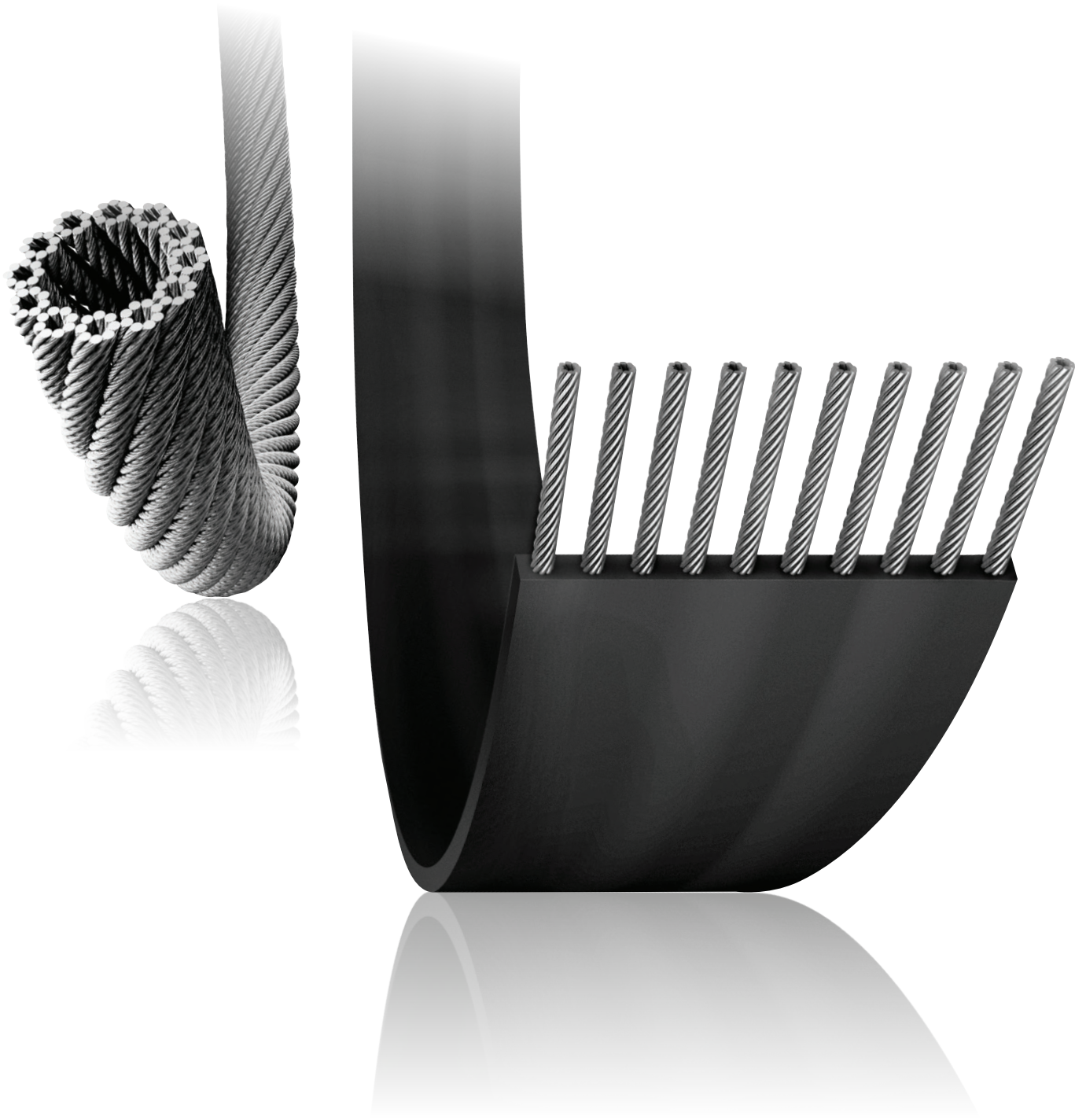


N:EX-X Passenger Elevator



N:EX-X

Originated from the globally synchronous steel belt technology of
South Korea's Hyundai Elevator

Belt Type Passenger Elevators





ADVANCED INDUSTRY 4.0 MANUFACTURING TECHNOLOGY



SMART DIGITAL MANUFACTURING TECHNOLOGY LEADS TO THE SAFE AND RELIABLE PERFORMANCE

Fully smart manufacturing
technology guarantees the quality

Informatization

Production visualization enables us to control the
production progress in real time

Automation

It can achieve the closed-loop control of incoming material
storage, production scheduling, loading and shipping, and
highly automate the production process.

Lean Manufacturing

Achieve lean manufacturing of all steps from raw material
processing to finished products and strictly control product
quality.

Flexibility

Import all advanced manufacturing equipment to satisfy
processing requirements customized by customers.



N:EX-X REVOLUTIONARY STEEL BELT DRIVE ELEVATOR

Using the South Korea's leading modern technology with new intelligent manufacturing processes, the N:EX-X Steel Belt Passenger Elevator has excellent performance and can be operated safely and reliably. Additionally, this elevator has further optimized its non-machine-room design and improved the utilization rate of the shaft. With the new elegant decoration and humanized human-machine interface, it can provide you with comfortable experience.

LIFE TIME X3

High-quality steel belt drive makes it more stably

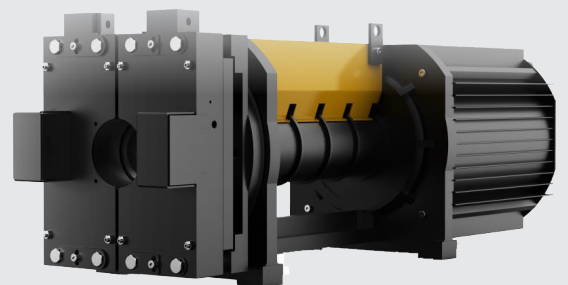
The service life is 3 times of a steel rope. The steel belts are having excellent corrosion resistance and lubrication free. It has the weight that is 40% lighter than a steel rope. Belt break detection system ensures its safety and reliability.



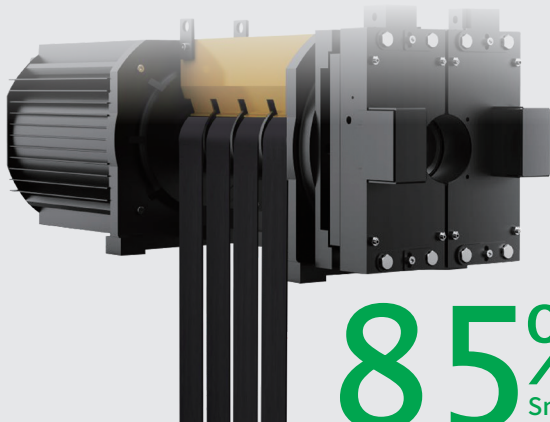
COMFORT

Traction sheave guide wheels

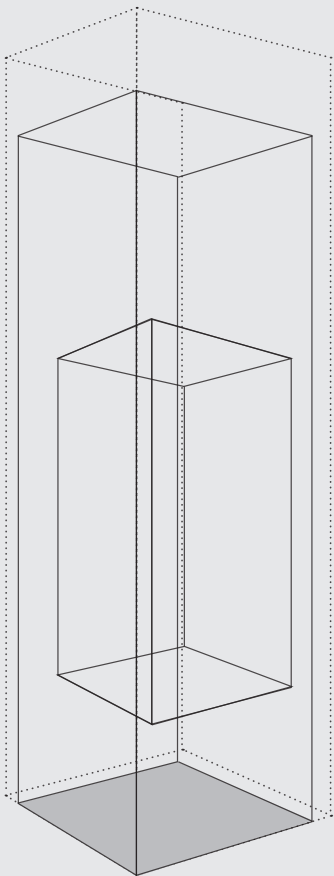
After meticulous valuations and several experiments, drum traction sheaves and guide sheaves are customized. The center of the belt is always centered on the wheel for safer operation.



COMPACT



85%
Smaller



8%
Shaft Space
Save

Higher Efficiency

The N:EX-X Passenger Elevator with the bar-shaped permanent magnet synchronous gearless main machine, which adopts the vibration-damping design for comfortable operation. It features lubrication free, easy maintenance, small size, light weight and simple installation.

More compact shaft space

Reduced shaft width and depth, top floor height and pit depth compared to the previous generation of machine-roomless products, providing more design flexibility for the builder

ECO-FRIENDLY



**Oil
Zero**

Steel Belt is eco-friendly

The conventional wire rope needs to be regularly greased. But, the belt system is semi-permanent and minimizes maintenance effort.

N:EX-X INTERIOR DESIGN

The N:EX-X is an innovative elevator with a belt drive system. In addition to these revolution, we designed the beauty and comfort of the space.



SD005



GD002



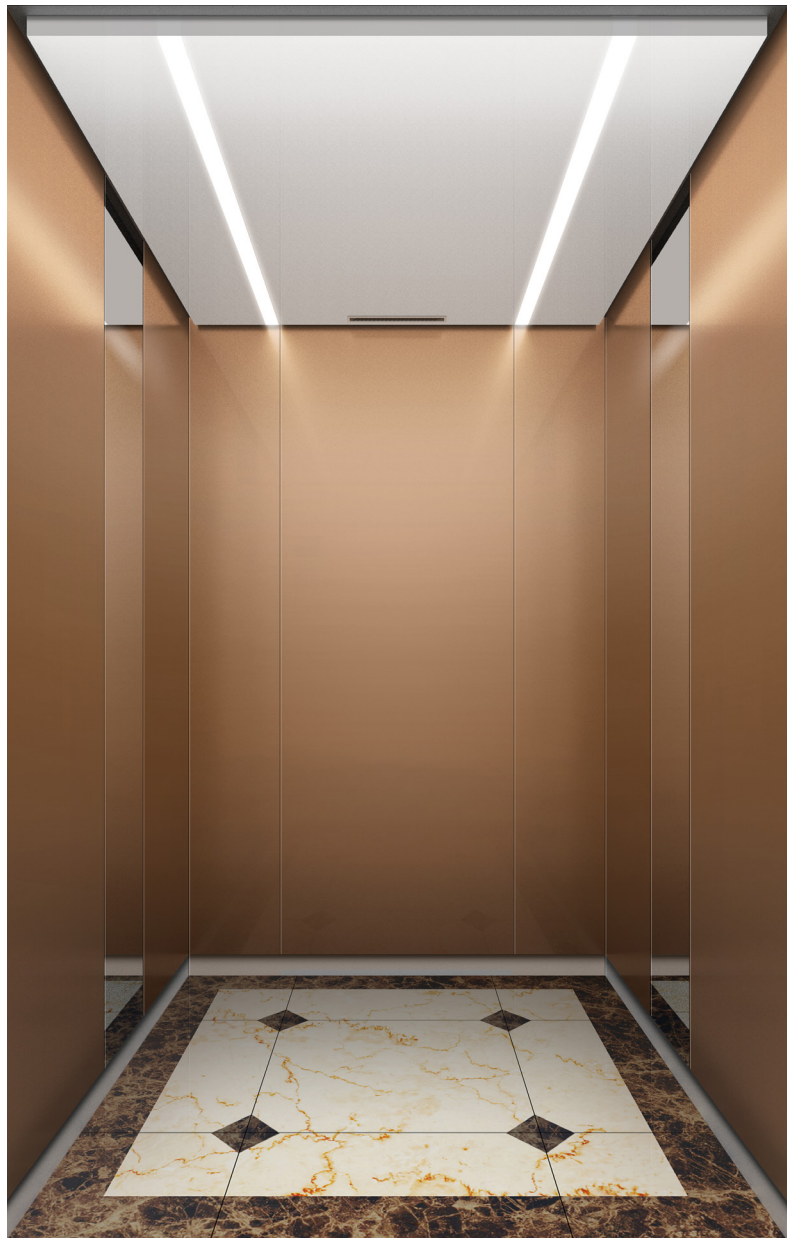
INTERIOR DESIGN

Fashion Minimalist Series

SD003

CAR DESIGN

Ceiling	CD-B31C / Ceiling Plate (Painted Steel / P040), LED Bar Lighting
Car Wall	Painted Steel(P025), Stainless Mirror
Car Door	Painted Steel(P025)
Car Operating Panel	OPP-D521
Flooring	PVC(FH-02)



360° Panoramic display of the car

ENTRANCE

50 TYPE

Doors	Painted Steel (P025)
Jamb	Painted Steel(P025) / 50 Type
Hall Button	HIP-SA21

100 TYPE

Doors	Painted Steel (P025)
Jamb	Stainless Hairline / 100 Type
Hall Button	HIP-D621



50 TYPE



100 TYPE

Note: 1. The sample photos may be different from a real elevator, which shall prevail.



INTERIOR DESIGN

Fashion Minimalist Series

SD006

CAR DESIGN

Ceiling	CD-199A / Ceiling Plate (Painted Steel / P036), LED Bar Lighting
Car Wall	Painted Steel(P036)
Car Door	Painted Steel(P036)
Car Operating Panel	OPP-D521
Flooring	PVC(FH-50)



360° Panoramic display of the car

ENTRANCE

50 TYPE

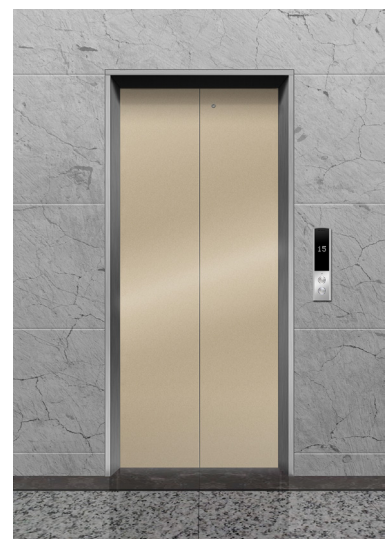
Doors	Painted Steel (P036)
Jamb	Painted Steel(P036) / 50 Type
Hall Button	HIP-SA21

100 TYPE

Doors	Painted Steel (P036)
Jamb	Stainless Hairline / 100 Type
Hall Button	HIP-D621



50 TYPE



100 TYPE

Note: 1. The sample photos may be different from a real elevator, which shall prevail.



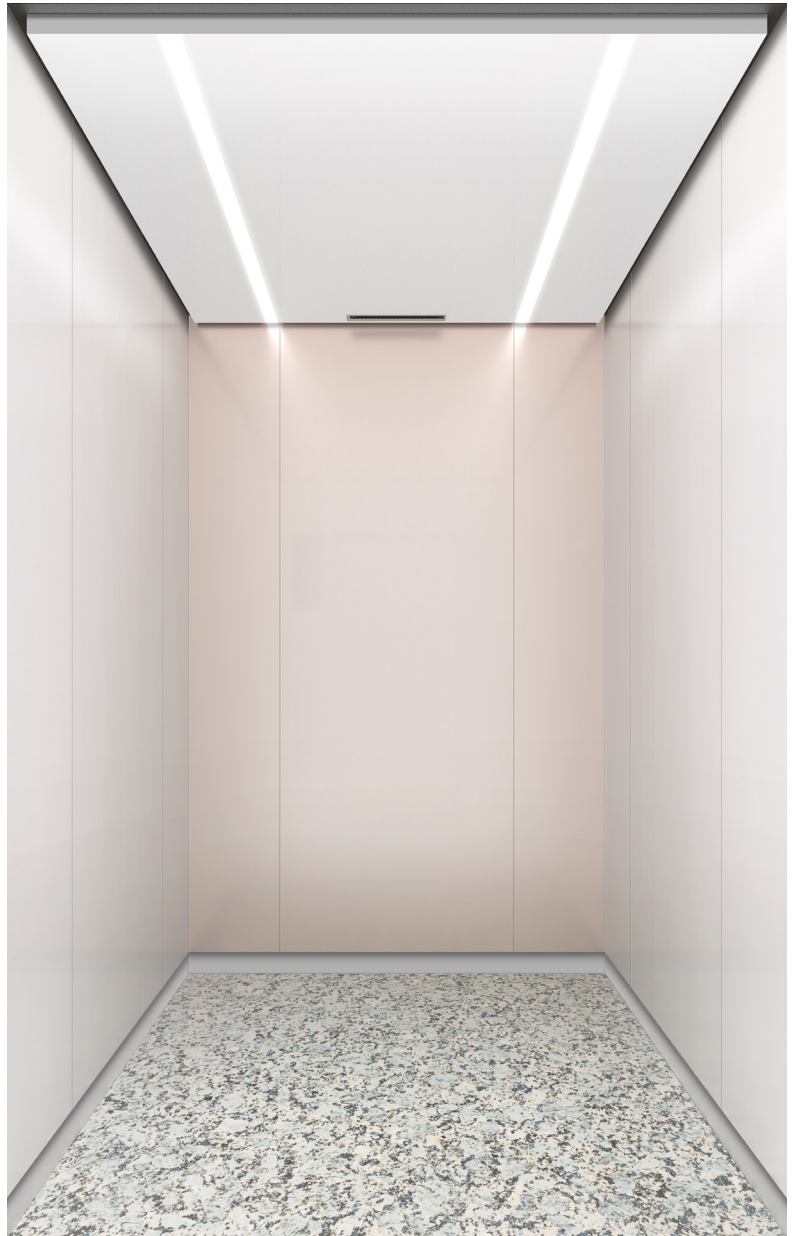
INTERIOR DESIGN

Fashion Minimalist Series

SD005

CAR DESIGN

Ceiling	CD-B31C / Ceiling Plate (Painted Steel / P040), LED Bar Lighting
Car Wall	Painted Steel(P040/P034)
Car Door	Painted Steel(P034)
Car Operating Panel	OPP-D521
Flooring	PVC(H03)



360° Panoramic display of the car

ENTRANCE

50 TYPE

Doors	Painted Steel (P034)
Jamb	Painted Steel(P034) / 50 Type
Hall Button	HIP-SA21

100 TYPE

Doors	Painted Steel (P034)
Jamb	Stainless Hairline / 100 Type
Hall Button	HIP-D621



50 TYPE



100 TYPE

Note: 1. The sample photos may be different from a real elevator, which shall prevail.



INTERIOR DESIGN

Longest Running Series

GD002

CAR DESIGN

Ceiling	CD-199A / Ceiling Plate (Painted Steel / P021), LED Bar Lighting
Car Wall	Stainless Hairline
Car Door	Stainless Hairline
Car Operating Panel	OPP-D521
Flooring	PVC(FH-13)



360° Panoramic display of the car



ENTRANCE



50 TYPE



100 TYPE



50 TYPE



100 TYPE

50 TYPE
(standard configuration for the 1st floor)

100 TYPE
(optional configuration)

50 TYPE
(standard configuration for other floors)

100 TYPE
(optional configuration)

Doors: Stainless Hairline
Jamb: 50 TYPE/Stainless Hairline
Hall Button: HIP-SA21 (standard configuration)

Stainless Hairline
100 TYPE/Stainless Hairline
HIP-D621 (optional configuration)

Doors: Painted Steel P033
Jamb: 50 TYPE/Painted steel P033
Hall Button: HIP-SA21 (standard configuration)

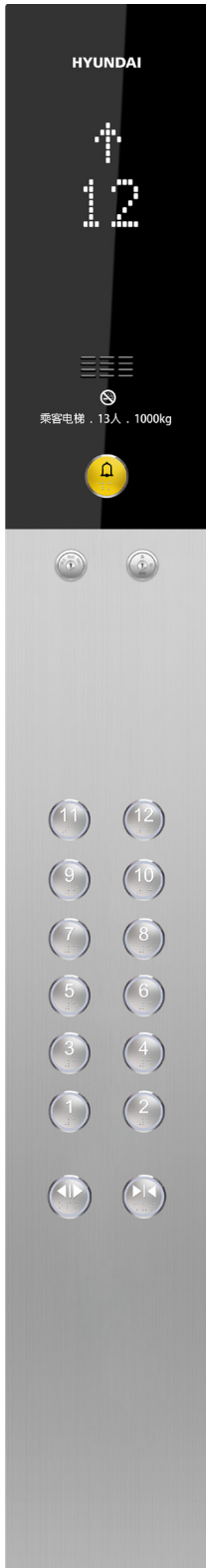
Painted Steel P033
100 TYPE/Stainless Hairline
HIP-D621 (optional configuration)

Note: 1. The sample photos may be different from a real elevator, which shall prevail.



FIXTURES DESIGN

Car Operating Panels



OPP-D521
Standard
configuration



OPP-LT221SW
Optional



Note: 1. The sample photos may be different from a real elevator, which shall prevail.

Hall Buttons



HIP-SA21
Standard
configuration



HIP-D621
Optional



HIP-LC21
Optional



HIP-LC21W
Optional



HIP-LT221C
Optional



HIP-LT221CW
Optional

Indicators (optional configuration)



PI-L210
With the air purification function
Its width is the same with the door width (JJ=700, 800, 900 and 1000)



PI-DG



PI-DH

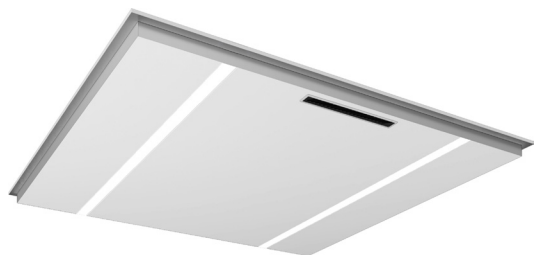
Handrail (optional configuration)



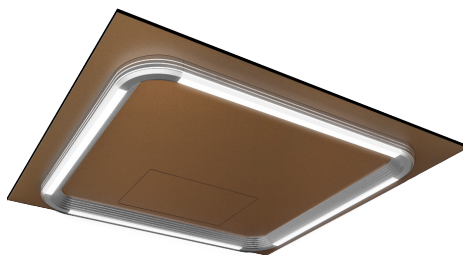
HR-01W

Note: 1. The sample photos may be different from a real elevator, which shall prevail.

Ceilings

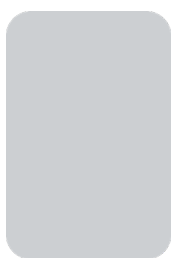


CD-B31C



CD-199A

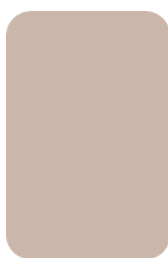
Painted Steels



P021



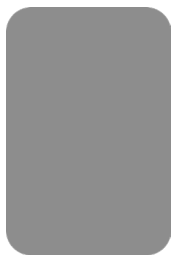
P025



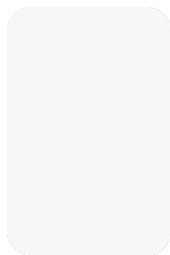
P034



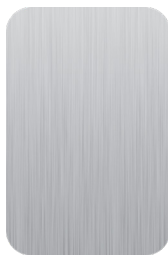
P036



P038

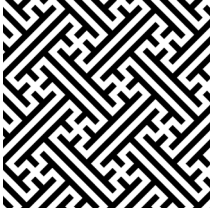


P040

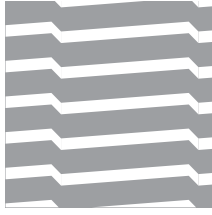


SUSHL

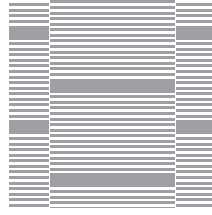
Etching Patterns



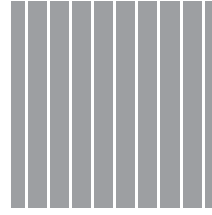
SE526



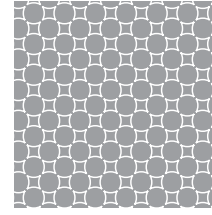
SE1168



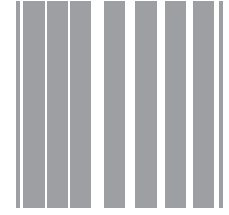
SE1169



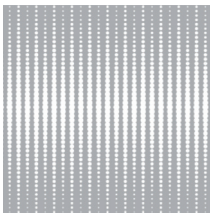
SE1591



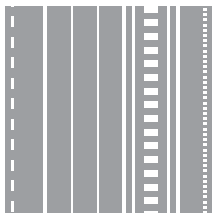
SE1673



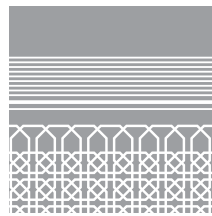
SE2302



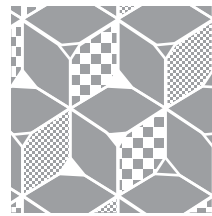
SE2304



SE2310



SE2311



SE2312

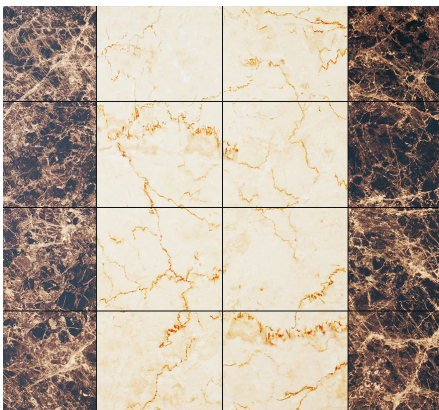
Flooring Designs



FH-02



FH-13



FH-50

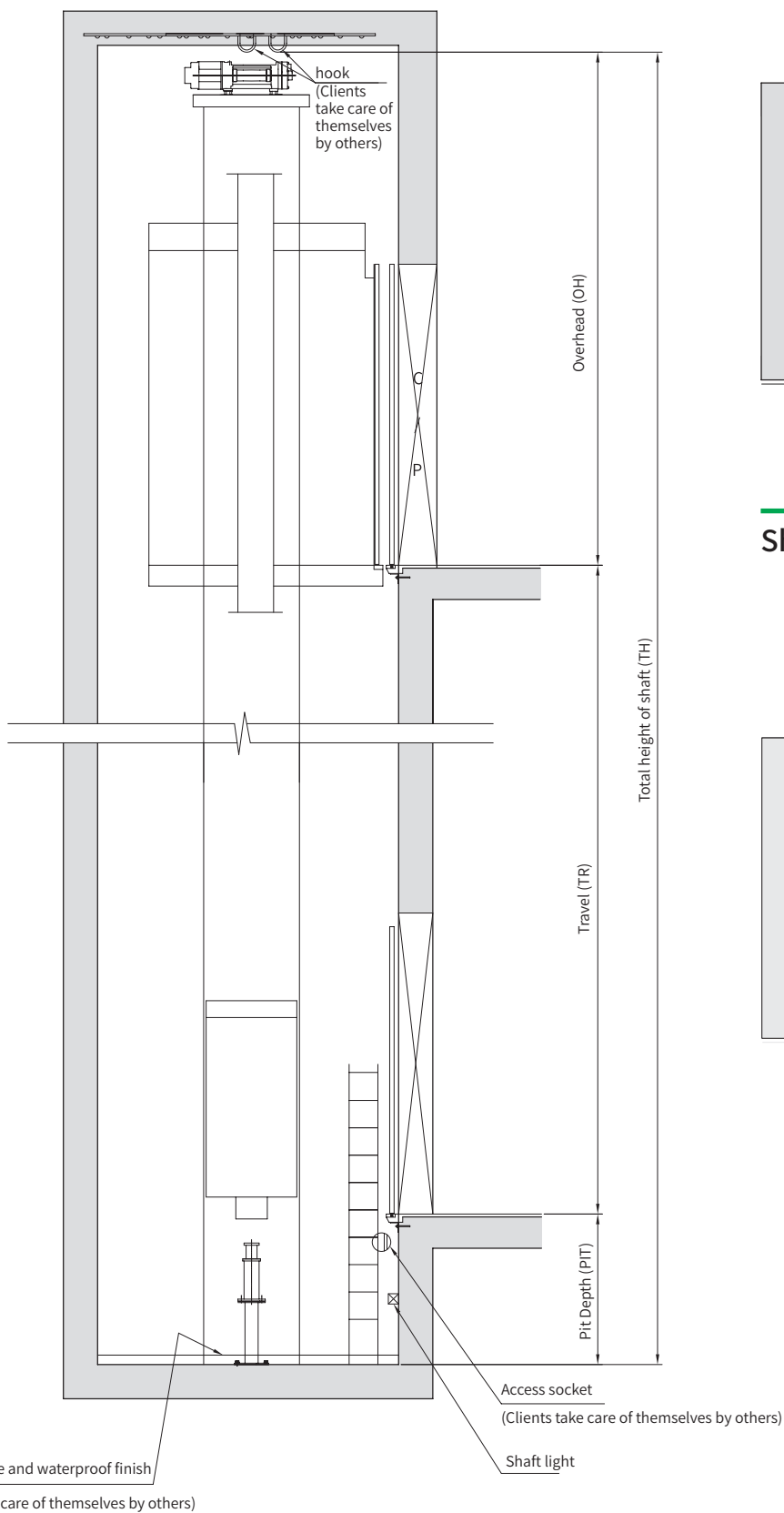


H03

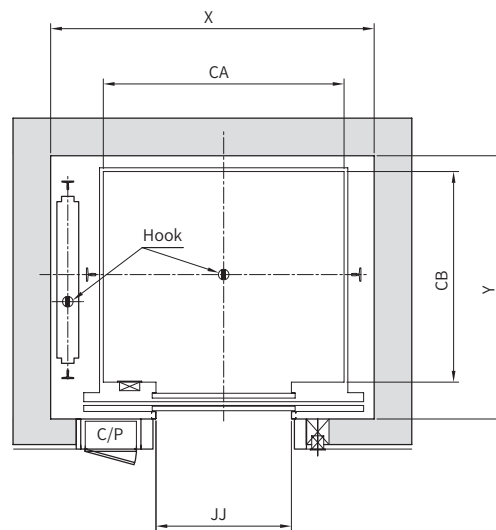
INSTALLATION LAYOUT PLAN AND DIMENSIONS

(N:EX-X Passenger elevator – Machineroomless)

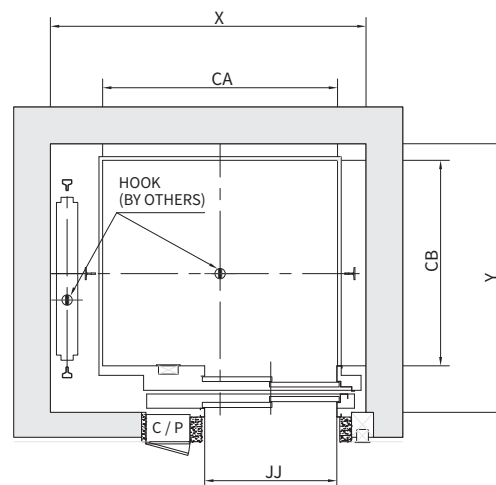
Shaft section



Shaft layout (Center Opening)



Shaft Layout (Side Opening)



Standard Dimensions (Center Opening, EN81-20/50)

(Unit : mm)

Capacity (kg)	Number of persons	Speed (m/s)	Max lifting height (m)	Number of landing	Car			Door			Hoistway			
					CA	CB	CH	Opening Type	JJ	HH	X	Y	Pit	Over Head
450	P6	1.0	30	10	1100	1150	2500	1SCO	700	2100	1700	1550	1100	3750
550	P7				1100	1300			800		1775	1650		
630	P8				1100	1400			800		1775	1750		
700	P9				1250	1400			800		1850	1750		
800	P10				1350	1400			800		1900	1750		
900	P12				1500	1400			900		2100	1750		
1000	P13				1600	1400			900		2150	1750		

Standard Dimensions (Side Opening, EN81-20/50)

(Unit : mm)

Capacity (kg)	Number of persons	Speed (m/s)	Max lifting height (m)	Number of landing	Car			Door			Shaft			
					CA	CB	CH	Opening Type	JJ	HH	X	Y	Pit	Over Head
320	P4	1.0	30	10	800	1100	2500	2SSO	700	2100	1350	1550	1100	4100
400	P5				1000	1100			800		1550	1550		
450	P6				1100	1100			800		1650	1570		
550	P7				1100	1300			800		1650	1730		
630	P8				1100	1400			800		1650	1830		3750
700	P9				1200	1400			900		1750	1830		
800	P10				1300	1400			900		1850	1830		
900	P12				1300	1600			900		1850	2030		
1000	P13				1600 1100	1400 2100			900		2150 1650	1830 2530		

- *Note: 1. The number of landing is calculated according to the interlamellar spacing of 3 m.
 2. In case the dimensions are different from the above table, please contact us.
 3. Double opening type elevators are not available for the above note 1.

LIST OF FUNCTIONS

Standard Functions

Function	Description
Collective Selective Control	Automatically collects car signals and answers them systematically as the car moves in a given direction.
Low Speed Auto-rescue	If a car does not stop at a landing under normal operation, it will automatically move to the closest landing at a low speed and open the doors to allow the passengers to exit.
Automatic Door Open	Elevator doors open automatically upon arriving at a landing.
Door Open in the Hall	Elevator doors open with a press of the hall button and close automatically. The doors remain open as long as the hall button remains pressed.
Advance Door Close	Doors can be closed immediately by pressing the door closing button.
Door Open by open button	Elevator doors can be opened, reopened or kept open at a landing by pressing the opening button.
Re-opening Operation	If the elevator doors do not close completely, they will automatically reopen and close again. If the doors fail to close after a few attempts, repair personnel will be summoned.
Inspection Operation	Once the inspection switch is engaged, the COP and indicator will display a "STOP" sign and stop taking calls. The car can be operated at inspection speed by pressing the up and down buttons
Emergency lighting	Emergency lighting in the car turns on automatically during power outages
Interphone(intercom)	An interphone system provides emergency communication between passengers in the car and personnel in the machine room, maintenance room, or security office.
Attendant Operation	Elevator operation can be changed from fully automatic service to manual service using a switch on the COP.
False call cancel	Passengers can press a floor button twice on the COP to cancel a call.
Reversal car call canceling	After the car finishes answering all the calls going in one direction, the system automatically resets and clears remaining calls going in the other direction.
Car light auto off	If no calls are registered within a given period of time, the car lights automatically shut off to conserve energy.
Car fan auto off	If no calls are registered within a given period of time, the car fan automatically shuts off to conserve energy.
Home Landing	If no calls are registered with a given period of time, the elevator automatically returns to the home floor.
Auto-learning	The elevator records diverse Hoistway data (height, safety switch position, etc.) and operational data permanently.
Flexible service floor setting	Floor display configurations can be set freely in the system. Base floor, lobby floor and non-stopping floors can be programmed flexibly.
Dot matrix display indication	Car position can be shown on dot matrix displays inside the car and on landings
Dynamic Display car Position	Safety switch action points and landing switches on each floor update elevator position data
Scroll Display	Scrolling arrow displays in the hall and cages signal movement and direction of travel.
Fireman's emergency return	When the key switch on the main floor or the COP is activated, all calls are canceled, the car returns immediately to the main floor, and the doors are opened.
Parking Operation	Elevator operation can be stopped or started with a switch.
Multi-beam Safety Protection	Multi-beams from the top to the bottom of the door detect obstructions and force the door to keep open or to reopen before it hits the obstruction.
Overload Protection	When passenger load exceeds maximum capacity, a buzzer will ring, doors will remain open, and a LED display will indicate capacity overload.
Anti-slipping car protection	If the system detects a three second feedback pulse and a mutative signal when the elevator reaches a landing, it will immediately stop the car and sound an alarm.
Over-travel Protection	Slow down switch and limit switch are used to prevent the car over travelling in the Hoistway.
Full bypass	If a car operating under auto mode becomes fully loaded, it will only respond to calls made from the inside of the car and bypass calls made from the hallway.
Anti-nuisance	When there is a significantly larger number of calls registered than the number of passengers, the elevator prevents unnecessary operation by cancelling all calls entered after it arrives at the nearest floor.
Cage slip prevention	If the system detects feedback pulses for more than 3 seconds after the elevator comes to a stop and there is a change in the cage's horizontal position, the system will suspect an elevator slip and immediately stop the cage's operation, sending out a breakdown alert.
Door Bypass	The elevator door bypass device bypasses a landing door or a cage door during inspection of an elevator.
Anti-terminal protection	A terminal stopping switch and final limit switches on the upper and lower ends of the elevator prevent the car from stopping past the limit
Advance door open	To improve the run efficiency, the door will be opened in advance during every leveling.
Independent operation	Withdraws car from group-control operation for independent use, such as maintenance or repair, and responds only to car calls.
Running Time Limit	During operation of the elevator, if the actual run time exceeds (the maximum run time is 45sec) specified by the runtime limiter and the leveling switch does not operate normally, all the operations of the car shall be stopped.
Overrun prevention	Deceleration switches and limit switches at the top and bottom ends of the elevator cage prevent the elevator from overrunning floors

Optional Functions

Function	Description
Parallel Control	If two elevators share a single call system, the closest elevator is summoned when the call button is pressed to increase efficiency
ELD (Emergency landing Device)	In the event of a power outage, the car will move to the nearest floor using a rechargeable battery.
Car arrival chime	A chime announces the arrival of the elevator to passengers
Voice Synthesizer	When the elevator arrives at a landing, a voice synthesizer announces the floor number and operational direction.



**ISO 9001
Certification**



**ISO 14001
Certification**



**OHSAS 18001
Certification**



**European CE
Certification**



**New Technology
Certification**

HEAD OFFICE & FACTORY

128, Chungjusanan 1-ro, Chungju-si, Chungcheongbuk-do, 27329, Korea

SEOUL OFFICE (GLOBAL SALES DIV.)

5F, East Bldg., Hyundai Group Bldg., 194, Youlgok-ro, Jongno-gu, Seoul, 03127, Korea

AFRICA

EGYPT

T 2-02-24029153,
2-012-23952311
E sales@hauslift.com

ETHIOPIA

T 251-911-503-000
E ieethiopia1@gmail.com

KENYA

T 254-722-667984
E charles.skymax@africaonline.co.ke
pslyall@skymaxenterprise.com

MOROCCO

T 212-522-490-485
E sales@hyundai-ascenseurs.com

NIGERIA

T 234-7034444400
E info@orionelevators.com

TUNISIA

T 212-71-962-967
E ideal.commerciale@gmail.com

ASIA

BANGLADESH

T 88-017-13209212
E zahid@edgeworksbd.com

CAMBODIA

T 855-23-888-399
E project@ggear.com.kh

CHINA

[Head Office (Factory)]
T 86-21-6485-8600
E 2017407@hdel.co.kr

INDIA

T 91-99-7000-0611
E rdmello@kinetic-hyundai.com

INDONESIA

[Service]
T 62-21-3511-355
E marketing@helin.co.id
[New Equipment]
T 62-21-631-8444
E sugiono_nusalim@yahoo.com

MALAYSIA

T 603-7932-1326
E ku.lee@hdel.co.kr
sales@hem.com.my

MONGOLIA

T 976-8908-3031
E munkhtuya@hyundai-elevator.mn

MYANMAR

T 951-2305336~37
E info@integral-ltd.com

PAKISTAN

T 92-21-3432-0601-5
E iitcpk@gmail.com

PHILIPPINES

T 632-8716-0905
E sales@hyundaielevator.com.ph

SRILANKA

T 94-11-2623208
E wasantha@abansgroup.com

THAILAND

T 66(0)-2240-3127-8
E ratee@loxley.co.th

VIETNAM

T 84-945-977-417
E ku.lee@hyundaielevator.com

EUROPE & CIS

AZERBAIJAN

T 994-50-207-2217
E info@s-enna.az

DENMARK

T 45-3311-3230
E office@s-elevator.com

GREECE

T 210-481-8756
E info@valsalift.gr

KAZAKHSTAN

T 7-701-599-9906
E dmitriy@hdel.kz

KYRGYZSTAN

T 996-707-646-666
E hyundaielevatorskg@gmail.com

POLAND

T 48-61-820-85-51
E maciej.dziurkiewicz@omilifts.com

ROMANIA

T 40-231-537-138
E office@smartelevators.eu

RUSSIA

[Moscow]
T 7-495-640-30-44
E msk@dvc.ru
[Vladi]
T 7-423-220-51-16
E hyundai@dvc.ru

TURKEY

T 90-216-510-1244
E orkun.tanman@hdel.com.tr

UKRAINE

T 380-44-4969580
E lift@eurolift.com.ua

UZBEKISTAN

T 998-90-910-1368
E innesa@boinncorp.com

MIDDLE EAST

BAHRAIN

T 973-1770-2468
E elevators@nassgroup.com

IRAQ

T 964-79-1336499
E info@alarjoon.com

ISRAEL

T 972-3-9630000
E lgorv@ledico.com

JORDAN

T 962-79-5526-713
E maadbseiso55@gmail.com

KUWAIT

T 965-2227-0722
E info@dealgtc.com

OMAN

T 968-9936-9663
E techno.hyundai@gmail.com

QATAR

T 974-4436-6689,
974-4427-9565
E info@ietg-hyundaielevator.com

SAUDI ARABIA

T 966-12-263-1907
E shoukath@escco.com.sa

UAE

T 971-4-294-4475
E dubai@bhnoe-hyundai.com

NORTH / SOUTH AMERICA

ARGENTINA

T 5411-3220-2878,
5411-4488-1948
E oqueta@skylift.com.ar

BRAZIL

T 55-11-5070-4141
E wellington.sierra@hdel.com.br

CHILE

T 56-9-225540849
E lcid@cyce.cl

COLOMBIA

T 57-4-444-9297
E sgiraldo@solucionesverticales.com.co

COSTA RICA

T 506-2291-0455
E mv.elevatec@grupomisol.com

DOMINICAN REPUBLIC

T 809-566-7474
E cesar@eleva.com.do

ECUADOR

T 593-2254-2831
E hyundai@a-i.com.ec

EL SALVADOR

T 503-2260-6233
E jc.elevatec@grupomisol.com

GUATEMALA

T 502-2388-0000
E cd.elevatec@grupomisol.com

HONDURAS

T 504-2564-6150,
504-2231-3302
E jc.elevatec@grupomisol.com

MEXICO

T 52-55-5663-2019
E yurich@insertechmx.com

NICARAGUA

T 505-2223-5217
E bb.elevatec@grupomisol.com

PANAMA

T 507-381-7422,
507-381-7427
E el.elevatec@grupomisol.com

PERU

T 506-7013-4407
E cc.elevatec@grupomisol.com

PARAGUAY

T 595-2120-1915
E egrau@inelec.com.py

USA & CANADA

T 812-705-4057
E Sales@ALT-AVT.com

VENEZUELA

T 58-212-232-8263
E ojssimon@gmail.com

HYUNDAI ELEVATOR CO., LTD.

This publication is for general informational purposes only and the company reserves the right to alter product design and specifications at any time.

Notes

1. Product images have been modified to help viewers' understanding. Design and colors depicted may differ from the actual products.
2. Specifications may differ from those provided in printed materials due to the selection of options or quality improvements.
3. Copyright © HYUNDAI ELEVATOR CD., LTD. All rights reserved.
4. Please recycle this brochure to protect the environment.

Website



YouTube

